



## **TauRIS Terminal-Loader V1.00**

**Rüter EPV-Systeme GmbH • Große Heide 39-41 • 32425 Minden, Germany**

**Tel.: +49 571 646900 • Fax: +49 571 6469020**

**eMail: [mail@tauris.de](mailto:mail@tauris.de) • <http://www.tauris.de>**

© 2007 Rüter EPV-Systeme GmbH, Germany

Rüter EPV-Systeme GmbH cannot be legally responsible nor liable for any false indications and the consequences thereof.

All rights reserved, also those of photomechanical reproduction and those of memory in electronic media.

We are grateful for any suggestions of improvement and hints.

The company Rüter EPV-Systeme reserves the right of technical alterations.

November 2007

Rüter EPV-Systeme GmbH, Große Heide 39-41, 32425 Minden, Germany  
Tel.: +49 571 646900, Fax: +49 571 6469020  
mail@tauris.de, <http://www.tauris.de>

**Contents**

General information .....	4
System requirements .....	4
Getting started .....	5
Installing the software .....	5
Setting up the software .....	6
Load the terminal program .....	6
Uninstalling the software .....	7
Guarantee .....	8
Delivery and packaging .....	8

**General information**

This software replaces the Software "TauRIS for MS-DOS".  
The easy use is adjusted for Microsoft Windows.

**System requirements**

Only use modern equipment.

Too many running tasks or too low system speed can disturb the safety in operation.

Please only use systems with at least the following minimum system requirements:

Operating system:	Microsoft Windows 98
CPU:	Pentium or compatible above 100 MHz
Memory:	64 MB RAM
Graphic:	800 x 600 pixels
Ports:	1x serial

## Getting started

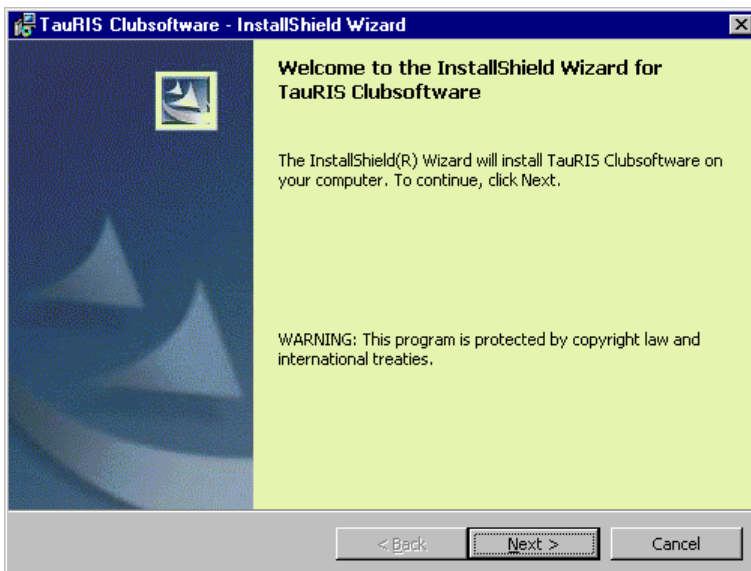
For using the TauRIS Clubsoftware you need a PC with a Microsoft win32 operating system.

For installation of the TauRIS Clubsoftware you get a CD with the installation program.

## Installing the software

Please put the CD "TauRIS Terminal-Loader" into your CD-ROM drive and start "SETUP.EXE".

The InstallShield starts the installation of the TauRIS Terminal-Loader.



The InstallShield installs all necessary program files on your system. Please click <Finish> to exit the successful installation.

## Setting up the software

For using the software in your club, you have to edit some settings.

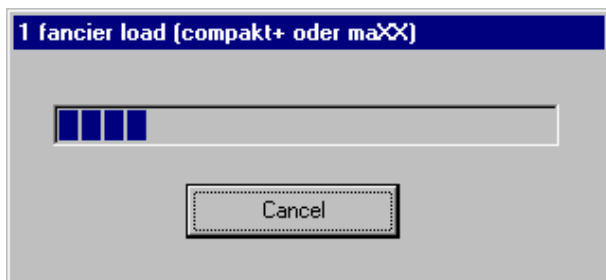
Setting up the software:

1. Select in the menu <Program> the function <Set>.
2. Select the comport
3. After these inputs click on <Save> to exit and save the setting.

## Load the terminal program

You can download a new terminal program into the terminal.

1. Select in the menu <Terminal> the version you want to download into the TauRIS terminal.
2. Connect the TauRIS terminal to the PC and the power supply while press and hold the TauRIS terminals key <6>
3. Please wait while loading.



When the download is finished the terminal beeps.

**Uninstalling the software**

Please put the CD "TauRIS Club" into your CD-ROM drive and run "SETUP.EXE".

The InstallShield starts the uninstallation of the TauRIS Terminal-Loader.

1. Please click on <Next> if you really want to uninstall the TauRIS Terminal-Loader.
2. Select the option <Remove> and click on <Next>.
3. Click on <Remove> to precede the uninstallation.
4. Click on <Finish> to finish the uninstallation.

## **Guarantee**

Rüter EPV-Systeme GmbH offers a two-year guarantee and begins with the date of delivery.

The guarantee does not cover the following:

- Damage caused by a failure to observe the instructions for use or as a result of improper use.
- Damage caused by external influences.
- Damage to devices on which the serial number or the seal have been removed, destroyed or tampered with.

A valid guarantee is to be proven by means of the invoice date. Please retain your invoice for this purpose!

The guarantee period will not be extended following the submission of a guarantee claim.

For damages which occur accidentally or causally by the use of the device, Rüter EPV-Systeme is not responsible.

Rüter EPV-Systeme GmbH does not take over any responsibility for faults or loss of data which are due to improper use or failure of the device.

## **Delivery and packaging**

Immediately upon receipt respectively unpacking of the device it should be checked with respect to visible transport damages. Is there a transport damage or is the consignment incomplete, please inform the supplier immediately. In this case, the system may not be put into action.

In order to avoid transport damage, we recommend that goods are only dispatched in their original packaging. Please retain it for this purpose.